

# THE RETURN TO BOYLSTON

## of Amy Williams Kendall

*Excerpt from Early Families of Boylston, Massachusetts*

by

*Nancy Filgate, Nadine Ekstrom, Victoria Triolo, Patricia Kelleher Bartram,  
Nathan Rollins*

Amy Williams Kendall, the eldest daughter of Robert Newell Kendall of Boylston, Worcester County, Massachusetts and his second wife, Henrietta “Etta” Parker Lapham of Ayer, Middlesex County, Massachusetts was born on 19 April 1867 in Groton, Middlesex County, Massachusetts.<sup>1,2</sup> She had four younger sisters: Althea Fletcher, born 28 February 1870 in Groton; Angie Elizabeth, born 24 May 1872 in Ayer; Eva Dudley, born 23 December 1874 in Ayer; and Etta Lapham, born in Ayer on 24 August 1878.<sup>3,4</sup> Her father worked in a plow shop in Groton.<sup>5</sup>

Amy’s mother had typhoid fever in 1876 and after the birth of the last daughter, Etta, she was declared insane on 27 April 1880.<sup>6,7</sup> A relative, Annie Bush, helped with the care of the family for a while.<sup>8</sup> Unfortunately, Amy’s mother died from tuberculosis on 25 August 1884 at age 37 years and 8 months in Ayer when Amy was only 16 years old.<sup>9</sup> When Amy was 24 years old, her father died on 29 December 1892 in Ayer at age 56 years, 3 months and 21 days.<sup>10</sup>

A decade later, on 11 September 1894, Amy’s sister Althea Fletcher, an operative age 29 years, married Alliston Stuart Wright, age 29 years and a machinist, of Clinton. It was a first marriage for both and they were married by Reverend W. E. Waterbury of Clinton, Worcester County, Massachusetts. Alliston had been born in Clinton on 23 September 1865, son of James Wright and his second wife, Isabella Stewart.<sup>11</sup>

According to that year’s federal census, on 14 June 1900 Amy was heading the household and living with her younger sisters Angie and Eva on Prospect Street in Ayer where Amy kept house while her sisters worked as clerks; Eva as a bank clerk and Angie as a confidential clerk. All three were unmarried, born in Massachusetts, and could read, write and speak English.<sup>12</sup>

Just three months later, on 19 September 1900, Amy’s sister Eva Dudley married Francis Parker Dunbrack in Ayer. The bride and groom were clerks, both aged 25 years, of Ayer and it was the first marriage for both. They were married by Reverend Parsons, pastor of the Baptist Church in Ayer. Francis Parker Dunbrack was born in Nova Scotia, the son of James Dunbrack and Janet Parker.<sup>13</sup>

By 1905, Amy’s sister, Angie, had moved to Clinton, Worcester County, Massachusetts where she had set up a “Toilet and Chiropody shop” after having completed a course at the “Beacon Toilet Studio” in Boston, Suffolk County, Massachusetts<sup>14</sup> A chiropody shop is a salon where shampooing, manicuring, face, scalp and body massage occurs.

Amy moved to Worcester where she was, in 1910, a boarder living at 72 Chatham Street and working as a dressmaker for a private family.<sup>15</sup>



**William Sylvester Garfield and Amy Williams Kendall Garfield**

*Photograph courtesy of Nancy Martin*

<sup>1</sup> Birth Records, Groton, Middlesex County, Massachusetts, 1867, digital image, ancestry.com

<sup>2</sup> Marriage Records, Groton, Middlesex County, 1867, digital image, ancestry.com

<sup>3</sup> Birth Records, Groton, Middlesex County, Massachusetts, 1870, digital image, ancestry.com

<sup>4</sup> Birth Records, Ayer, Middlesex County, Massachusetts, 1872, 1874, and 1878, digital images, ancestry.com

<sup>5</sup> United States Federal Census, Ayer, Middlesex County, Massachusetts, 1870, digital image, ancestry.com

<sup>6</sup> Reminiscences, Angie Elizabeth Kendall, 1941

<sup>7</sup> Wills and Probate Records, 1635-1991, Probate Court of Middlesex, Massachusetts, 6128, Vol 47, Page 55, 1880, digital image, ancestry.com

<sup>8</sup> Reminiscences, Angie Elizabeth Kendall, 1941

<sup>9</sup> Death Records, Ayer, Middlesex County, Massachusetts, 1884, digital image, ancestry.com

<sup>10</sup> Death Records, Ayer, Middlesex County, Massachusetts, 1892, digital image, ancestry.com

<sup>11</sup> Marriage Records, Ayer, Middlesex County, Massachusetts, 1894, digital image, ancestry.com

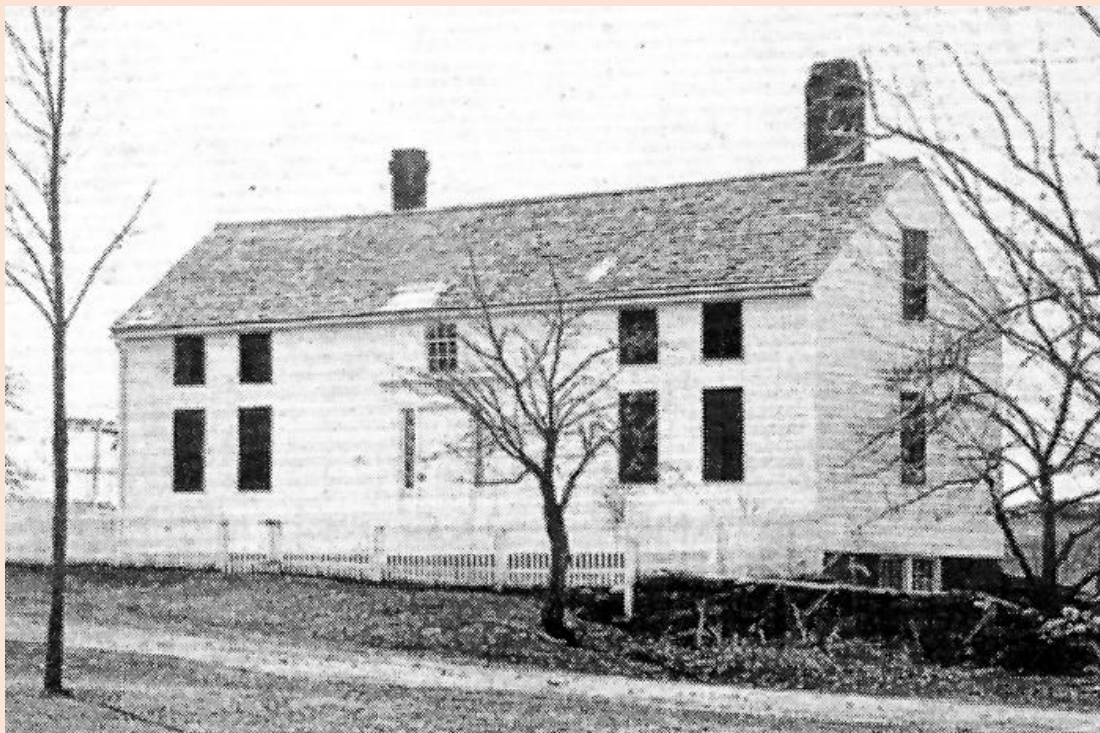
<sup>12</sup> United States Federal Census, Ayer, Middlesex County, Massachusetts, 1900, digital image, ancestry.com

<sup>13</sup> Marriage Records, Ayer, Middlesex County, Massachusetts, 1900, digital image, ancestry.com

<sup>14</sup> The Fitchburg Sentinel, Fitchburg, Massachusetts, 24 April 1905, digital image, ancestry.com

<sup>15</sup> United States Federal Census, Worcester, Worcester County, Massachusetts, 1910, digital image, ancestry.com

On 28 September 1912, Amy at age 40 years was married to William Sylvester Garfield, age 34 years, by the clergyman George S. Dodge in Boylston, Worcester County, Massachusetts.<sup>16</sup> William Sylvester Garfield was born 23 June 1878 in Holden, Worcester County, Massachusetts, the son of Henry J. Garfield and Martha L. Whipple. He was a twin to Myron Smith Garfield.<sup>17</sup> Before William married Amy, he was living with his twin brother and his wife, Edna, in Boylston. William was a farmer like his father and brother.<sup>18</sup> He was drafted in 1918 but was excused because he had a hernia and wore a truss.<sup>19</sup> William and Amy resided in the center of Boylston (now 661 Main Street) in a house which had been the original part of the David Taylor Tavern in the eighteenth century.<sup>20</sup>



**Garfield Home**  
Boylston, Massachusetts  
BHSM Photograph Collection

During World War I, Mrs. William S. Garfield, served as the chairwoman of a local Red Cross chapter which was formed to send packages to the men on the front.<sup>21</sup>

William died on 5 March 1927 of shock after an operation for a strangulated hernia in Clinton Hospital at the age of 48 years, 8 months, and 11 days. He had been a painter.<sup>22</sup>

After the death of her husband, Amy owned and ran a boarding house at 79 Main Street, Boylston that in 1930 had a value of \$4000. At the time of the 1930 federal census, her boarders were: her widowed sister, Althea Kendall Wright, age 60 years: Alonzo Waterman, age 74 years: and Ida E. Reed, age 60 years.<sup>23</sup>

Amy's sister Althea Fletcher Kendall Wright died 28 February 1932 in Palmer Memorial Hospital, Boston, Suffolk County, Massachusetts, after an illness of one year.

Amy died in Boylston, Worcester County, Massachusetts, on 16 October 1933 at age 65 years, 5 months and 25 days from hypertension and cardio renal disease. Her obituary appeared in the Evening Gazette, Worcester, reporting that she had died at home after an illness of a few weeks. She was a member of the Ayer Baptist Church, the Auxiliary of the Boylston Men's Club. She was survived by her three living sisters, Angie, Eva, and Etta, and was buried in Section 5 Lot 339 of Boylston's Pine Grove Cemetery.<sup>24,25</sup>



**Amy Williams Garfield Grave Marker**  
Pine Grove Cemetery  
Photograph by Bruce D. Filgate

<sup>16</sup> Marriage Records, Boylston, Worcester County, Massachusetts, 1912, digital image, ancestry.com

<sup>17</sup> Birth Records, Holden, Worcester County, Massachusetts, 1878, digital image, ancestry.com

<sup>18</sup> United States Federal Census, Boylston, Worcester County, Massachusetts, 1910, digital image, ancestry.com

<sup>19</sup> U.S., World War I Draft Registration Cards, 1917-1918, digital image, ancestry.com

<sup>20</sup> Boylston Historical Series, Bruce D. Filgate, 2012

<sup>21</sup> Boylston Historical Series, Bruce D. Filgate, 2012

<sup>22</sup> Death Records, Boylston, Worcester County, Massachusetts, 1927

<sup>23</sup> United States Federal Census, Boylston, Worcester County, Massachusetts, 1930, digital image, ancestry.com

<sup>24</sup> Obituary, Amy Garfield, Evening Gazette, 17 October 1933, Page 13, Worcester, Worcester County, Massachusetts, digital image, genealogybank.com

<sup>25</sup> Garfield Gravestone and Grave Markers, Pinegrove Cemetery, Boylston, Worcester County, Massachusetts  
Filgate, Nancy et al, *Early Families of Boylston, Massachusetts*, Boylston Historical Collaborative, Boylston, Worcester County, Massachusetts